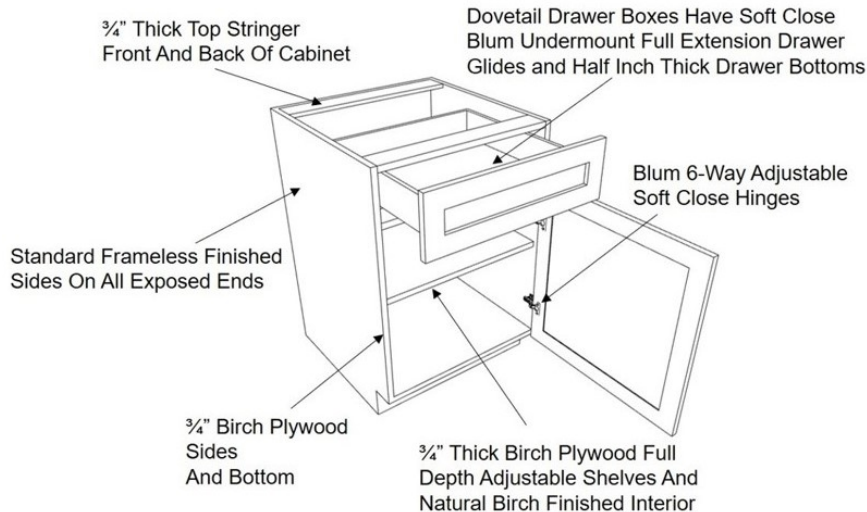


**Wolverine Brand Cabinetry**  
**Frameless Cabinet Specifications**

**Cabinet and Door Design:**

Overlay doors and drawer fronts with 1/8" reveal and 1/4" reveal at the top of base cabinets  
Standard doors are 2 1/4" frame with solid wood panel and choice of profiles  
Doors and drawers are soft close  
Interior is clear coat on birch veneer plywood  
Cabinets up to 36" wide have bi-parting doors, no partition or center stile in face frame  
Custom size cabinets at no up-charge

**Base Cabinets:**

3/4" birch plywood sides, bottom, and top stringer at cabinet front and back  
1/4" birch plywood back with 3/4" nailer ledge  
3/4" birch plywood full depth adjustable shelf with metal shelf pins  
Dovetail joined 5/8" solid maple drawer box with 1/2" bottom  
Blum full extension, soft close, under mount drawer slides  
Standard finished end to be finished cabinet side  
Optional applied panel finished ends or applied integral decorator end panels

**Wall Cabinets:**

3/4" birch plywood sides, top, and bottom  
1/4" birch plywood back with 3/4" nailer ledge  
3/4" birch plywood full depth adjustable shelf with metal shelf pins  
Standard 12" deep wall cabinets with option to increase depth for an additional charge  
Standard finished end to be finished cabinet side  
Optional applied panel finished ends or applied integral decorator end panels

