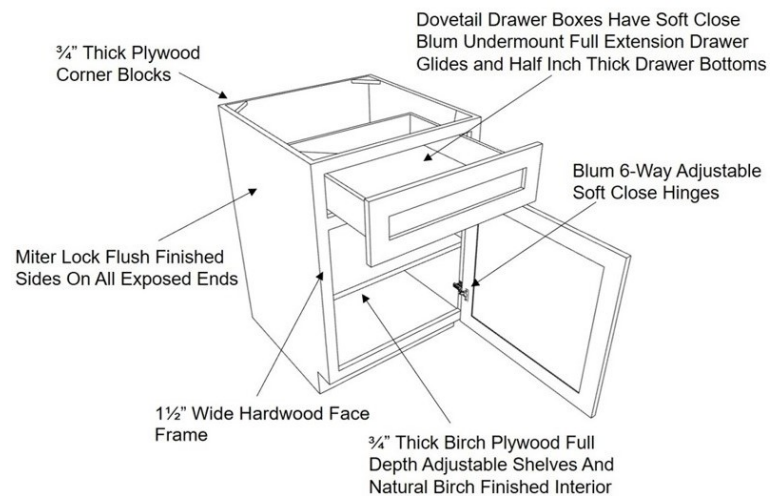


Wolverine Brand Cabinetry

Face Frame Cabinet Specifications



Cabinet and Door Design:

Option of full overlay or partial overlay at no additional cost
Inset and beaded inset construction available at an additional cost
Standard doors are 2 1/4" frame with solid wood panel and choice of profiles
Doors and drawers are soft close
Interior is clear coat on birch veneer plywood
Cabinets up to 36" wide have bi-parting doors, no center stile in face frame
Optional extended stiles in place of fillers
Ability to factory seam cabinets together
Custom size cabinets at no up-charge

Base Cabinets:

1/2" birch plywood sides dadoed to accept 1/2" maple plywood bottom
1/4" birch plywood back
1" solid hardwood hanging rail
3/4" plywood corner blocks
3/4" birch plywood full depth shelf adjustable on brass shelf pins
Dovetail joined 5/8" solid maple drawer box with 1/2" bottom
Blum full extension, soft close, under mount drawer slides
1 1/2" hardwood face frames pocket screwed together, dadoed to accept cabinet sides and bottom
Seamless miter locked corners on exposed ends are standard
Optional integral decorator end panels on exposed ends

Wall Cabinets:

1/2" birch plywood sides dadoed to accept 1/2" maple plywood top and bottom
1/4" birch plywood back
3/4" solid hardwood top and bottom hanging rails
3/4" birch plywood full depth shelf, adjustable on brass shelf pins
1 1/2" hardwood face frames pocket screwed together, dadoed to accept cabinet sides, top and bottom
Seamless miter locked corners on exposed ends are standard
Optional integral decorator end panels on exposed ends
13" deep wall cabinets for flush inset doors

