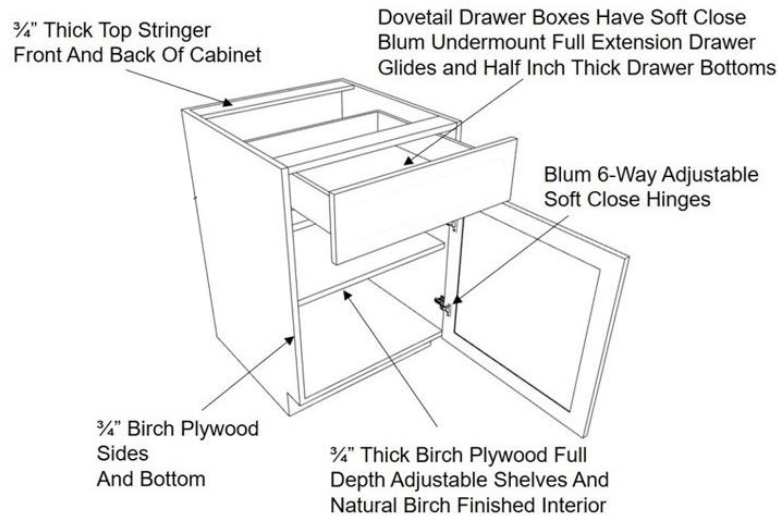


Wolverine Brand Cabinetry**Econ Line - Frameless Cabinet Specifications****Cabinet and Door Design:**

Overlay doors and drawer fronts with 3/16" reveal

Doors and drawers are soft close

Wood options are Soft Maple, Red Oak, Knotty Oak, and Cherry in a variety of stain options

Painted doors are MDF with 5 paint color options

4 door style options:

Richmond, Madison, and Harvest door styles are 2 1/4" frame

Reno door style is a slab door

Slab drawer fronts – outside profile will match outside profile of door selected

Cabinets up to 36" wide have bi-parting doors, no partition or center stile

Base Cabinets:

18mm cabinet grade plywood sides, top, and bottom in birch with UV coating and PVC edge-banding

1/4" birch plywood back with UV coating and 3/4" hanging rail

3/4" birch plywood full depth adjustable shelf with metal shelf pins

Dovetail joined 5/8" solid maple drawer box with 1/2" bottom

Blum full extension, soft close, under mount drawer slides

Blum 3-way adjustable soft close hinges

Cabinet sides are 3/4" wide loose panels to be installed on site to sit flush with face of door / drawer

Wall Cabinets:

18mm cabinet grade plywood sides, top, and bottom in birch with UV coating and PVC edge-banding

1/4" birch plywood back with UV coating and 3/4" hanging rail

3/4" maple plywood full depth adjustable shelf with metal shelf pins

Standard 12" deep wall cabinets

Blum 3-way adjustable soft close hinges

Cabinet sides are 3/4" wide loose panels to be installed on site to sit flush with face of door / drawer

Wall cabinet bottoms are natural birch

